

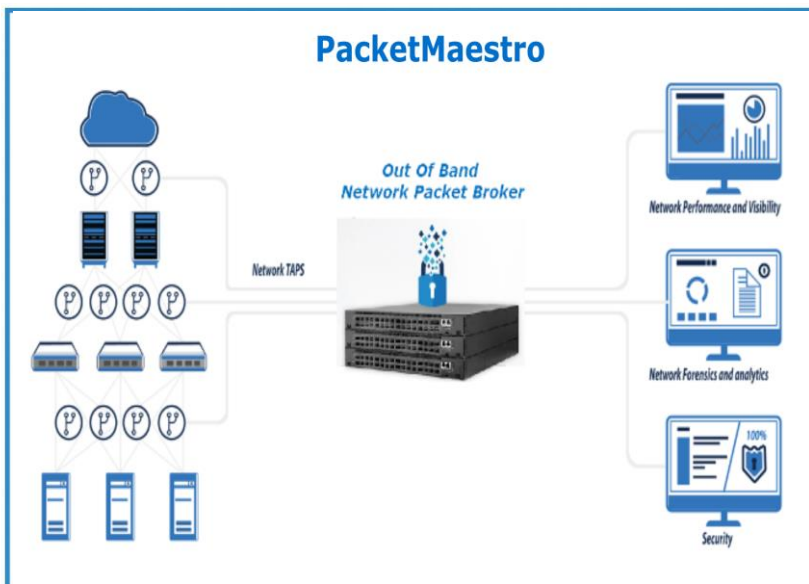
# PACKETMAESTRO

## DISAGGREGATED PACKET BROKER



Network visibility technology gives you detailed insights into everything in and circulating through your network. It is crucial to locate and fix network problems as they arise.

The new PacketMaestro is intended to accelerate the deployment of management, monitoring, and security tools, eliminate blind spots in conventional architectures and provide high-scale, multi-speed support, a comprehensive feature set, and a competitive total cost of ownership (TCO).



### Highlights



Resiliency



Low Latency



Front to Back/  
Back to Front  
Airflow



High Port Density

### Key Features

- Cost-effective, open and disaggregated packet broker Solution
- Out-of-Band (OOB) deployment
- Comprehensive feature set including aggregation, replication, filtering, and load balancing.
- Filtering: supporting multiple filters simultaneously
- Support of IPv4 and IPv6
- Real-time port/packet statistics, SNMP alerts
- Management GUI web user interface, CLI, and Rest-API
- Supporting the functionality of multiple port speeds up to 64x40
- Port breakout: 40G to 4x10G, 100G to 4x25G
- Modular software solutions with "pay as you grow" pricing models.

## PM10C

### 48x10G RJ-45 + 6x40G ports



## Platform Description

### Data Center Optimized Design

Switch Ports: 48 x RJ-45 copper each supporting 10G/1G. 6 x QSFP each supporting 40G or 4 x 10G.

Management Ports: on Front Panel: 1 x RJ-45 serial console 1 x RJ-45 100/1000BASE-T management

### Performance

Switching Capacity: 720 Gbps Full Duplex  
Forwarding Rate: 424.58 Mpps  
Jumbo frames support up to 9216 Bytes.  
Packet Buffer Size: 16 MB integrated packet buffer

### Power Supplies Specifications

PSUs: 2 redundant, load-sharing, hot-swappable AC or-48 VDC  
Input Voltage: 90 to 264 VAC at 50-60 Hz. -48 to -72 VDC Input Current: Max 6 A@100/120 VAC, 3 A@ 200/240 VAC, 10 A@ -72 VDC

### Resilient Configuration

Switch Silicon: Broadcom BCM56864 Trident II+ 720G CPU  
Modules: Intel® Atom® C2538 4-Core 2.4 GHz x86 processor.  
8 GB SO-DIMM DDR3 RAM with ECC  
16 MB SPI NOR Flash

## PM25

### 48X25G + 8X100G Ports



## Platform Description

### Data Center Optimized Design

Typical power of under 4W per 100G port and 1.5W per 25G port  
Over 94% efficient power supplies  
1+1 redundant & hot-swappable power supplies  
3+1 redundant & hot-swappable fans  
Support standard and reversed airflow.

Tool-less maintenance and simple installation

### Performance

8x QSFP28 100G ports & 48x SFP28 25G ports  
Flexible support: 100G, 40G, 25G, and 10G  
Up to 4.0 Tbps Full Duplex  
Up to 2003.4 Mpps  
Wire speed L2 and L3 forwarding.  
Latency from 814ns for 25G (cut-through mode)

### Power Supplies Specifications

Input connector AC HVDC IEC 320-C14  
Rated power: 550W  
Input voltage range: 100-240 VAC  
Frequency: 50-60 Hz  
Typical input current: 7.2 - 3.5A  
Input high-voltage: 240 VDC  
Input current: 3.6A (DC)

### Resilient Configuration

Broadcom BCM56873 (Trident 3)  
IntelXeonD-1527 processor  
8GB DRAM  
System storage  $\geq$  240GB

## PM100

### 32X100G ports



## Platform Description

### Data Center Optimized Design

Switch Ports: 32 x 100G QSFP28 each supporting 40G or 4 x 10G, 100G or 4 x 25G.

Management Ports: on Front Panel: 1 x RJ-45 serial console 1 x RJ-45 100/1000BASE-T management

### Performance

3.2 Tbsp Full Duplex Forwarding Rate: 1.52 Bpps

Jumbo frames support up to 9216 Bytes.

### Power Supplies Specifications

Input Voltage: 90 to 240 VAC at 50-60 Hz. -36 to -72 VDC Redundant Hot swappable power supplies

Redundant Hot swappable FANS

### Resilient Configuration

Switch Silicon: Broadcom BCM56960 Tomahawk CPU Modules: Intel Atom C-2538 processor.

8 GB SO-DIMM DDR3 RAM with ECC  
64 MB SPI NOR Flash system storage  
16 GB Packet buffers

## PM100+ 64X100G ports



### Platform Description

#### Data Center Optimized Design

Switch Ports: 64 x 100G QSFP28  
each supporting 40G or 4 x 10G,  
100G or 4 x 25G Management Ports:  
on Front Panel: 1 x RJ-45 serial  
console 1 x RJ-45 100/1000BASE-T  
management.

#### Performance

Switching Capacity: 6.4 Tbsp Full  
Duplex Forwarding Rate: 4.2 Bpps  
Jumbo frames support up to 9216  
Bytes.

#### Power Supplies Specifications

Input Voltage: 90 to 240 VAC at 50-  
60 Hz. -36 to -72 VDC Redundant Hot  
swappable power supplies  
Redundant Hot swappable FANs

#### Resilient Configuration

Switch Silicon: Broadcom BCM  
Tomahawk II CPU Modules: Intel  
Xeon D-1518 processor 8 GB SO-  
DIMM DDR4 RAM with ECC  
16 MB SPI NOR Flash system storage  
42 GB Packet buffers

## PM400

### 32X400G ports



## Platform Description

### Data Center Optimized Design

Switch Ports: 32 x 400G QSFP28 supporting 400G or 4 x 100G.

Management Ports: on Front Panel: 1 x RJ-45 serial console 1 x RJ-45 100/1000BASE-T management

### Performance

Switching Capacity: 12.8 Tbsp Full Duplex Forwarding Rate: 5.21 Bpps Jumbo frames support up to 9216 Bytes.

### Power Supplies Specifications

Rated voltage range: 100–240 VAC  
Maximum voltage range: 90–264 VAC  
Frequency: 50–60 Hz

Input voltage: 100~240 VAC at 50-60 Hz

Redundant load sharing hot swappable power supplies Redundant Fans

### Resilient Configuration

Switch Silicon: Broadcom BCM TD4  
CPU Modules: Intel Xeon D-1518 processor 16 GB SO-DIMM DDR3 RAM with ECC

32 MB SPI NOR Flash system storage  
64 GB Packet buffers

## PM400+

### 64X400G ports



## Platform Description

### Data Center Optimized Design

Switch Ports: 64 x 400G QSFP28 supporting.

400G or 4 x 100G

Management Ports: on Front Panel: 1 x RJ-45 serial console 1 x RJ-45 100/1000BASE-T management

### Performance

Switching Capacity: 51.2 Tbsp Full

Duplex Forwarding Rate: 10.6 Bpps

Jumbo frames support up to 9216 Bytes

### Power Supplies Specifications

Input Voltage: 100-240V AC - 180-310V DC

Input Current: 12-7A (AC) 6A (DC)

50~60Hz Input Connector: IEC 320-C13

2+2 Redundant power supplies 7+1

Redundant fans

### Resilient Configuration

Switch Silicon: Broadcom BCM TMHK4

CPU Modules: Intel Xeon D-1627

processor 16 GB SO-DIMM DDR3 RAM with ECC

240 MB SPI NOR Flash system storage

113.66 GB Packet buffers

## Product Matrix

ECIN P/N	PM10C	PM25	PM100	PM100+	PM400	PM400+
	Base-T	SFP	QSFP28	QSFP28	QSFP28-DD	QSFP28-DD
<b>Port</b>						
<b>1G</b>	48 copper	48	0	0	0	0
<b>10G</b>	24 with Breakout	48 (+32 with Breakout)	128 with Breakout	256 with Breakout	0	0
<b>25G</b>	0	48 (+32 with Breakout)	128 with Breakout	256 with Breakout	128	0
<b>40G</b>	6	8	32	64	0	0
<b>100G</b>	0	8	32	64	128	0
<b>400G</b>	0	0	0	0	32	64
<b>400G ZR/ZR+</b>						16
<b>Management OOB</b>	1	1	1	1	1	1
<b>Console RJ45 serial</b>	1	1	1	1	1	1
<b>USB2.0</b>	1	1	1	1	1	1
<b>switching capacity</b>	720Gbps	2.56 Tbps	3.2Tbps	6.4 Tbps	12.8 Tbps (Full Duplex)	51.2 Tbps
<b>Packet forwarding</b>	424 Mpps	1920 Mpps	2003.4Mpps	1.52 Bpps	5.21 Bpps	10.6 Bpps
<b>Vlans</b>	4K	4K	4K	4K	4K	4K
<b>Chipset</b>	BCM TD2	BCM TD3	BCM TD3 (56870)	BCM TMH2	BCM TMH3 (56980)	BCM TMH4 (56990)
<b>CPU</b>	Intel Atom-C2538	CN7130-1200w	Intel Xeon D-1527	Intel Xeon-D1518	Intel Xeon D-1548	Intel Xeon D-1627
<b>System memory</b>	8GB	4GB	8GB	8G	16 GB	16GB
<b>System storage</b>	8GB	16GB	240GB	64GB	32 GB	240GB
<b>Packet buffer</b>	16MB	32MB	32MB	16MB	64 MB	113.66 MB
<b>Power supplies</b>	1+1R	1+1R	1+1R	1+1R	1+1R	2+2R
<b>Input Voltage</b>	AC/DC	AC/DC	AC/DC	AC/DC	AC	AC/DC
<b>Fans</b>	4+1R	3+1R	4+1R	3+1R	5+1R	7+1R
<b>Air Flow</b>	F2B/B2F	F2B/B2F	F2B/B2F	F2B/B2F	F2B/B2F	F2B
<b>OS</b>	SONIC	SONIC	SONIC	SONIC	SONIC	SONIC
<b>Max Power consumption</b>	348W	300W	450W	550W	2100W	2500W
<b>Dimensions inches</b>	18.6x17.4x1.7 1 in.	17.4x15.24x1.73 in.	17.4x22.04x1.73 in	17.3x20.3x1.7 in.	17.25x21.1x1.69 in	17.4x6.89x29.92 in
<b>Dimensions mm</b>	473x442x44 mm	442x387x44 mm	442x560x44 mm	438x515x44 mm	43.84x53.6x4.31 mm	442x175x760 mm
<b>Weight</b>	21 lb	17.64 lb (8Kg)	22.7 lb (10.3 Kg)	24 lb	24.38 lb (11.6 Kg)	96 lb (42 Kg)



Regulatory						
<b>Emission</b>	FCC Part 15 Class A VCCI	FCC CFR Title 47, Part 15, Subpart B, ANSI C63.4- 2014 IC Regulation ICES-003: Issue 7	FCC CFR Title 47, Part 15, Subpart B, ANSI C63.4- 2014 IC Regulation ICES-003: Issue 7	CE Mark EN 55032 AS/NZS CISPR 32 EN 55024 EN 61000 3-2 EN 61000 3-3 CISPR 32 FCC Part 15 Subpart B Class A VCCI Class A	EN 55032 Class A EN 61000-3-2 EN 61000-3-3 VCCI-CISPR 32 Class A AS/NZS CISPR 32 Class A ICES-003 Issue 7 Class A FCC Class A EN 55035 IEC 61000-4- 2/3/4/5/6/8/1 1	Emissions: FCC part15 Subpart B, EN55032, EN61000-3-2, EN61000-3-3 or EN61000-3- 11, EN61000- 3-12 (as applicable) Immunity: EN55035 Emissions and Immunity: EN300386
<b>Safety</b>	UL/CUL	ANSI/UL 62368-1 CAN/CSA C22.2 No. 62368-1	ANSI/UL 62368-1, CAN/CSA C22.2 No. 62368-1	CB UL	UL (CSA 22.2 No 62368-1 & UL62368-1) CB (IEC/EN60950- 1 & IEC/EN 62368-1)	UL/CSA 62368- 1, EN 62368-1, IEC 62368-1 CB Scheme with all country differences
<b>Certification</b>	IEC 68-2-14 Vibration: IEC 68-2-6 Shock: IEC 68- 2-29	FCC; IC; ETL	FCC; IC; ETL	GR63-CORE (Pre-test)	GR63-CORE (Pre-test)	North America (NRTL) European Union (EU) BSMI (Taiwan) C-Tick (Australia) CCC (PRC) MSIP (Korea) EAC (Customs Union) VCCI (Japan)
<b>European Union Directive</b>	RoHS-6 Compliant	Country of origin: Malaysia	Country of Rigin : Malaysia	RoHS-6 Compliant Country of Origin: Taiwan (TAA Compliant) Electrical and Electronic Equipment (WEEE Directive 2002/96/EC)	RoHS-2.0 Compliant Electrical and Electronic Equipment (WEEE Directive 2002/96/EC)	2006/95/EC Low Voltage Directive 2004/108/EC EMC Directive 2011/65/EU RoHS Directive

## Ordering information

Model	Type	Part Number	Description
<b>Fully licensed Kits</b>			
<b>PM400+</b>	KIT	PM400+-64x400G-F-AC-M	PacketMaestro Kit, Open Switch 64x400G ports F2B, AC PSU + PM400+M Software + 3Y M&S included
<b>PM400+</b>	KIT	PM400+-64x400G-B-AC-M	PacketMaestro Kit, Open Switch 64x400G ports B2F, AC PSU + PM400+M Software + 3Y M&S included
<b>PM400+</b>	KIT	PM400+-64x400G-F-DC	PacketMaestro Kit, Open Switch 64x400G ports F2B, DC PSU + PM400+M Software + 3Y M&S included
<b>PM400+</b>	KIT	PM400+-64x400G-B-DC	PacketMaestro Kit, Open Switch 64x400G ports B2F, DC PSU + PM400+M Software + 3Y M&S included
<b>PM400+</b>	M&S	PM400+-SW-SSU-1Y-RWL	PacketMaestro PM400+M Software Support and Upgrades Service 1Yr. Renewal Only (per switch)
<b>PM400+</b>	M&S	PM400+-SW-SSU-3Y-RWL	PacketMaestro PM400+M Software Support and Upgrades Service 3Yr. Renewal Only (per switch)
<b>PM400+</b>	M&S	PM400+-HWSW-SSU-1Y-RWL	PacketMaestro PM400+M HW/SW Support and Upgrades Service 1Yr. Renewal Only (per switch/per year)
<b>PM400</b>	KIT	PM400E-32x400G-F-AC	PacketMaestro Kit, Open Switch 32x400G ports F2B, AC PSU + PM400E Software + 3Y M&S included
<b>PM400</b>	KIT	PM400E-32x400G-B-AC	PacketMaestro Kit, Open Switch 32x400G ports B2F, AC PSU + PM400E Software + 3Y M&S included
<b>PM400</b>	KIT	PM400E-32x400G-F-DC	PacketMaestro Kit, Open Switch 32x400G ports F2B, DC PSU + PM400E Software + 3Y M&S included
<b>PM400</b>	KIT	PM400E-32x400G-B-DC	PacketMaestro Kit, Open Switch 32x400G ports B2F, DC PSU + PM400E Software + 3Y M&S included
<b>PM400</b>	M&S	PM400E-SW-SSU-1Y-RWL	PacketMaestro PM400E Software Support and Upgrades Service 1Yr. Renewal Only (per switch)
<b>PM400</b>	M&S	PM400E-SW-SSU-3Y-RWL	PacketMaestro PM400E Software Support and Upgrades Service 3Yr. Renewal Only (per switch)
<b>PM100+</b>	KIT	PM100+E-64x100G-F-AC	PacketMaestro Kit, Open Switch 64x100G ports F2B, AC PSU + PM100+E Software + 3Y M&S included
<b>PM100+</b>	KIT	PM100+E-64x100G-B-AC	PacketMaestro Kit, Open Switch 64x100G ports B2F, AC PSU + PM100+E Software + 3Y M&S included
<b>PM100+</b>	KIT	PM100+E-64x100G-F-DC	PacketMaestro Kit, Open Switch 64x100G ports F2B, DC PSU + PM100+E Software + 3Y M&S included
<b>PM100+</b>	KIT	PM100+E-64x100G-B-DC	PacketMaestro Kit, Open Switch 64x100G ports B2F, DC PSU + PM100+E Software + 3Y M&S included
<b>PM100+</b>	M&S	PM100E-SW-SSU-1Y-RWL	PacketMaestro PM100+E Software Support and Upgrades Service 1Yr. Renewal Only (per switch)
<b>PM100+</b>	M&S	PM100E-SW-SSU-3Y-RWL	PacketMaestro PM100+E Software Support and Upgrades Service 3Yr. Renewal Only (per switch)
<b>PM100</b>	KIT	PM100-32x100G-F-AC-M	PacketMaestro Kit, Open Switch 32x100G ports F2B, AC PSU + PM100 Software + 3Y M&S included
<b>PM100</b>	KIT	PM100-32x100G-B-AC-M	PacketMaestro Kit, Open Switch 32x100G ports B2F, AC PSU + PM100 Software + 3Y M&S included
<b>PM100</b>	KIT	PM100-32x100G-F-DC-M	PacketMaestro Kit, Open Switch 32x100G ports F2B, DC PSU + PM100 Software + 3Y M&S included

<b>PM100</b>	KIT	PM100-32x100G-B-DC-M	PacketMaestro Kit, Open Switch 32x100G ports B2F, DC PSU + PM100 Software + 3Y M&S included
<b>PM100</b>	M&S	PM100-SW-SSU-1Y-RWL	PacketMaestro PM100 Software Support and Upgrades Service 1Yr. Renewal Only (per switch)
<b>PM100</b>	M&S	PM100-SW-SSU-3Y-RWL	PacketMaestro PM100 Software Support and Upgrades Service 3Yr. Renewal Only (per switch)
<b>PM100</b>	KIT	PM100-32x100G-F-AC-E	PacketMaestro Kit, Open Switch 32x100G ports F2B, AC PSU + PM100 Software + 3Y M&S included
<b>PM100</b>	KIT	PM100-32x100G-B-AC-E	PacketMaestro Kit, Open Switch 32x100G ports B2F, AC PSU + PM100 Software + 3Y M&S included
<b>PM100</b>	KIT	PM100-32x100G-F-DC-E	PacketMaestro Kit, Open Switch 32x100G ports F2B, DC PSU + PM100 Software + 3Y M&S included
<b>PM100</b>	KIT	PM100-32x100G-B-DC-E	PacketMaestro Kit, Open Switch 32x100G ports B2F, DC PSU + PM100 Software + 3Y M&S included
<b>PM100</b>	M&S	PM100-SW-SSU-1Y-RWL	PacketMaestro PM100 Software Support and Upgrades Service 1Yr. Renewal Only (per switch)
<b>PM100</b>	M&S	PM100-SW-SSU-3Y-RWL	PacketMaestro PM100 Software Support and Upgrades Service 3Yr. Renewal Only (per switch)
<b>PM100</b>	M&S	PM100-HWSW-SSU-1Y-RWL	PacketMaestro PM100 HW/SW Support and Upgrades Service 1Yr. Renewal Only (per switch/per year)
<b>PM25</b>	KIT	PM25-48x25G-F-AC-M	PacketMaestro Kit, Open Switch 48x25G ports F2B, AC PSU + PM25 Software + 3Y M&S included
<b>PM25</b>	KIT	PM25-48x25G-B-AC-M	PacketMaestro Kit, Open Switch 48x25G ports B2F, AC PSU + PM25 Software + 3Y M&S included
<b>PM25</b>	KIT	PM25-48x25G-F-DC-M	PacketMaestro Kit, Open Switch 48x25G ports F2B, DC PSU + PM25 Software + 3Y M&S included
<b>PM25</b>	KIT	PM25-48x25G-B-DC-M	PacketMaestro Kit, Open Switch 48x25G ports B2F, DC PSU + PM25 Software + 3Y M&S included
<b>PM25</b>	M&S	PM25-SW-SSU-1Y-RWL	PacketMaestro PM25 Software Support and Upgrades Service 1Yr. Renewal Only (per switch)
<b>PM25</b>	M&S	PM25-SW-SSU-3Y-RWL	PacketMaestro PM25 Software Support and Upgrades Service 3Yr. Renewal Only (per switch)
<b>PM25</b>	KIT	PM25-48x25G-F-AC-E	PacketMaestro Kit, Open Switch 48x25G ports F2B, AC PSU + PM25 Software + 3Y M&S included
<b>PM25</b>	KIT	PM25-48x25G-B-AC-E	PacketMaestro Kit, Open Switch 48x25G ports B2F, AC PSU + PM25 Software + 3Y M&S included
<b>PM25</b>	KIT	PM25-48x25G-F-DC-E	PacketMaestro Kit, Open Switch 48x25G ports F2B, DC PSU + PM25 Software + 3Y M&S included
<b>PM25</b>	KIT	PM25-48x25G-B-DC-E	PacketMaestro Kit, Open Switch 48x25G ports B2F, DC PSU + PM25 Software + 3Y M&S included
<b>PM25</b>	M&S	PM25-SW-SSU-1Y-RWL	PacketMaestro PM25 Software Support and Upgrades Service 1Yr. Renewal Only (per switch)
<b>PM25</b>	M&S	PM25-SW-SSU-3Y-RWL	PacketMaestro PM25 Software Support and Upgrades Service 3Yr. Renewal Only (per switch)
<b>PM25</b>	M&S	PM25-HWSW-SSU-1Y-RWL	PacketMaestro PM25 HW/SW Support and Upgrades Service 1Yr. Renewal Only (per switch/per year)
<b>PM10</b>	KIT	PM10C-48x10GC-F-AC	PacketMaestro Kit, Open Switch 48x10G Copper ports F2B, AC PSU + PM10C Software + 3Y M&S included
<b>PM10</b>	KIT	PM10C-48x10GC-B-AC	PacketMaestro Kit, Open Switch 48x10G Copper ports B2F, AC PSU + PM10C Software + 3Y M&S included

<b>PM10</b>	KIT	PM10C-48x10GC-F-DC	PacketMaestro Kit, Open Switch 48x10G Copper ports F2B, DC PSU + PM10C Software + 3Y M&S included
<b>PM10</b>	KIT	PM10C-48x10GC-B-DC	PacketMaestro Kit, Open Switch 48x10G Copper ports B2F, DC PSU + PM10C Software + 3Y M&S included
<b>PM10</b>	M&S	PM10C-SW-SSU-1Y-RWL	PacketMaestro PM10C Software Support and Upgrades Service 1Yr. Renewal Only (per switch)
<b>PM10</b>	M&S	PM10C-SW-SSU-3Y-RWL	PacketMaestro PM10C Software Support and Upgrades Service 3Yr. Renewal Only (per switch)
<b>PM1</b>	KIT	PM1U-48x1G-F-AC	PacketMaestro Kit, Open Switch 48x1G ports F2B, AC PSU + PM1U Software + 3Y M&S included
<b>PM1</b>	KIT	PM1U-48x1G-B-AC	PacketMaestro Kit, Open Switch 48x1G ports B2F, AC PSU + PM1U Software + 3Y M&S included
<b>PM1</b>	KIT	PM1U-48x1G-F-DC	PacketMaestro Kit, Open Switch 48x1G ports F2B, DC PSU + PM1U Software + 3Y M&S included
<b>PM1</b>	KIT	PM1U-48x1G-B-DC	PacketMaestro Kit, Open Switch 48x1G ports B2F, DC PSU + PM1U Software + 3Y M&S included
<b>PM1</b>	M&S	PM1U-SW-SSU-1Y-RWL	PacketMaestro PM1U Software Support and Upgrades Service 1Yr. Renewal Only (per switch)
<b>PM1</b>	M&S	PM1U-SW-SSU-3Y-RWL	PacketMaestro PM1U Software Support and Upgrades Service 3Yr. Renewal Only (per switch)

### 12xPorts Licensed Kits (1 M&S Included)

<b>PM25</b>	KIT	PM25-12x25G-F-AC-M	PacketMaestro Kit, Open Switch 12x25G ports F2B, AC PSU + PM25 Software PM25-12P-SW + 1Y M&S included
<b>PM25</b>	KIT	PM25-12x25G-B-AC-M	PacketMaestro Kit, Open Switch 12x25G ports B2F, AC PSU + PM25 Software PM25-12P-SW + 1Y M&S included
<b>PM25</b>	KIT	PM25-12x25G-F-DC-M	PacketMaestro Kit, Open Switch 12x25G ports F2B, DC PSU + PM25 Software PM25-12P-SW + 1Y M&S included
<b>PM25</b>	KIT	PM25-12x25G-B-DC-M	PacketMaestro Kit, Open Switch 12x25G ports B2F, DC PSU + PM25 Software PM25-12P-SW + 1Y M&S included
<b>PM25</b>	M&S	PM25-SW-SSU-1Y-RWL	PacketMaestro PM25 Software Support and Upgrades Service 1Yr. Renewal Only
<b>PM25</b>	M&S	PM25-SW-SSU-3Y-RWL	PacketMaestro PM25 Software Support and Upgrades Service 3Yr. Renewal Only
<b>PM100</b>	KIT	PM100-12x100G-F-AC-M	PacketMaestro Kit, Open Switch 12x100G ports F2B, AC PSU + PM100 Software + 1Y M&S included
<b>PM100</b>	KIT	PM100-12x100G-B-AC-M	PacketMaestro Kit, Open Switch 12x100G ports B2F, AC PSU + PM100 Software + 1Y M&S included
<b>PM100</b>	KIT	PM100-12x100G-F-DC-M	PacketMaestro Kit, Open Switch 12x100G ports F2B, DC PSU + PM100 Software + 1Y M&S included
<b>PM100</b>	KIT	PM100-12x100G-B-DC-M	PacketMaestro Kit, Open Switch 12x100G ports B2F, DC PSU + PM100 Software + 1Y M&S included
<b>PM100</b>	M&S	PM100-SW-SSU-1Y-RWL	PacketMaestro PM100 Software Support and Upgrades Service 1Yr. Renewal Only (per switch)
<b>PM100</b>	M&S	PM100-SW-SSU-3Y-RWL	PacketMaestro PM100 Software Support and Upgrades Service 3Yr. Renewal Only (per switch)
<b>PM100</b>	KIT	PM100-12x100G-F-AC-E	PacketMaestro Kit, Open Switch 12x100G ports F2B, AC PSU + PM100 Software + 1Y M&S included

<b>PM100</b>	KIT	PM100-12x100G-B-AC-E	PacketMaestro Kit, Open Switch 12x100G ports B2F, AC PSU + PM100 Software + 1Y M&S included
<b>PM100</b>	KIT	PM100-12x100G-F-DC-E	PacketMaestro Kit, Open Switch 12x100G ports F2B, DC PSU + PM100 Software + 1Y M&S included
<b>PM100</b>	KIT	PM100-12x100G-B-DC-E	PacketMaestro Kit, Open Switch 12x100G ports B2F, DC PSU + PM100 Software + 1Y M&S included
<b>PM100</b>	M&S	PM100-SW-SSU-1Y-RWL	PacketMaestro PM100 Software Support and Upgrades Service 1Yr. Renewal Only (per switch)
<b>PM100</b>	M&S	PM100-SW-SSU-3Y-RWL	PacketMaestro PM100 Software Support and Upgrades Service 3Yr. Renewal Only (per switch)
<b>24xPorts Licensed Kits (1 M&amp;S Included)</b>			
<b>PM25</b>	KIT	PM25-24x25G-F-AC-M	PacketMaestro Kit, Open Switch 24x25G ports F2B, AC PSU + PM25 Software PM25-24P-SW + 1Y M&S included
<b>PM25</b>	KIT	PM25-24x25G-B-AC-M	PacketMaestro Kit, Open Switch 24x25G ports B2F, AC PSU + PM25 Software PM25-24P-SW + 1Y M&S included
<b>PM25</b>	KIT	PM25-24x25G-F-DC-M	PacketMaestro Kit, Open Switch 24x25G ports F2B, DC PSU + PM25 Software PM25-24P-SW + 1Y M&S included
<b>PM25</b>	KIT	PM25-24x25G-B-DC-M	PacketMaestro Kit, Open Switch 24x25G ports B2F, DC PSU + PM25 Software PM25-24P-SW + 1Y M&S included
<b>PM25</b>	M&S	PM25-SW-SSU-1Y-RWL	PacketMaestro PM25 Software Support and Upgrades Service 1Yr. Renewal Only
<b>PM25</b>	M&S	PM25-SW-SSU-3Y-RWL	PacketMaestro PM25 Software Support and Upgrades Service 3Yr. Renewal Only
<b>PM100</b>	KIT	PM100-24x100G-F-AC-M	PacketMaestro Kit, Open Switch 24x100G ports F2B, AC PSU + PM100 Software + 1Y M&S included
<b>PM100</b>	KIT	PM100-24x100G-B-AC-M	PacketMaestro Kit, Open Switch 24x100G ports B2F, AC PSU + PM100 Software + 1Y M&S included
<b>PM100</b>	KIT	PM100-24x100G-F-DC-M	PacketMaestro Kit, Open Switch 24x100G ports F2B, DC PSU + PM100 Software + 1Y M&S included
<b>PM100</b>	KIT	PM100-24x100G-B-DC-M	PacketMaestro Kit, Open Switch 24x100G ports B2F, DC PSU + PM100 Software + 1Y M&S included
<b>PM100</b>	M&S	PM100-SW-SSU-1Y-RWL	PacketMaestro PM100 Software Support and Upgrades Service 1Yr. Renewal Only (per switch)
<b>PM100</b>	M&S	PM100-SW-SSU-3Y-RWL	PacketMaestro PM100 Software Support and Upgrades Service 3Yr. Renewal Only (per switch)
<b>PM100</b>	KIT	PM100-24x100G-F-AC-E	PacketMaestro Kit, Open Switch 24x100G ports F2B, AC PSU + PM100 Software + 1Y M&S included
<b>PM100</b>	KIT	PM100-24x100G-B-AC-E	PacketMaestro Kit, Open Switch 24x100G ports B2F, AC PSU + PM100 Software + 1Y M&S included
<b>PM100</b>	KIT	PM100-24x100G-F-DC-E	PacketMaestro Kit, Open Switch 24x100G ports F2B, DC PSU + PM100 Software + 1Y M&S included
<b>PM100</b>	KIT	PM100-24x100G-B-DC-E	PacketMaestro Kit, Open Switch 24x100G ports B2F, DC PSU + PM100 Software + 1Y M&S included
<b>PM100</b>	M&S	PM100-SW-SSU-1Y-RWL	PacketMaestro PM100 Software Support and Upgrades Service 1Yr. Renewal Only (per switch)
<b>PM100</b>	M&S	PM100-SW-SSU-3Y-RWL	PacketMaestro PM100 Software Support and Upgrades Service 3Yr. Renewal Only (per switch)



## Software Only

### Perpetual license

Part Number	Description
<b>PM400+-400G-SW-PERP</b>	PacketMaestro PM400+ 400G Perpetual license, maintenance and support included (per switch)
<b>PM400-400G-SW-PERP</b>	PacketMaestro PM400 400G Perpetual license, maintenance and support included (per switch)
<b>PM100+-100G-SW-PERP</b>	PacketMaestro PM100+ 100G Perpetual license, maintenance and support included (per switch)
<b>PM100-100G-SW-PERP</b>	PacketMaestro PM100 100G Perpetual license, maintenance and support included (per switch)
<b>PM25-25G-SW-PERP</b>	PacketMaestro PM25 25G Perpetual license, maintenance and support included (per switch)
<b>PM10C-10G-SW-PERP</b>	PacketMaestro PM10 10G Perpetual license, maintenance and support included (per switch)
<b>PM400+-12P-SW-PERP1</b>	PacketMaestro PM400+ 400G 12x ports perpetual license, 1Y 1Y maintenance and support included
<b>PM400-12P-SW-PERP1</b>	PacketMaestro PM400 400G 12x ports perpetual license, 1Y maintenance and support included
<b>PM100+-12P-SW-PERP1</b>	PacketMaestro PM100+ 100G 12x ports perpetual license, 1Y maintenance and support included
<b>PM100-12P-SW-PERP1</b>	PacketMaestro PM100 100G 12x ports perpetual license, 1Y maintenance and support included
<b>PM25-12P-SW-PERP1</b>	PacketMaestro PM25 25G 12x ports perpetual license, 1Y maintenance and support included
<b>PM10C-12P-SW-PERP1</b>	PacketMaestro PM10C 10G 12x ports perpetual license, 1Y maintenance and support included
<b>PM400+-24P-SW-PERP1</b>	PacketMaestro PM400+ 400G 24x ports perpetual license, 1Y maintenance and support included
<b>PM400-24P-SW-PERP1</b>	PacketMaestro PM400 400G 24x ports perpetual license, 1Y maintenance and support included
<b>PM100+-24P-SW-PERP1</b>	PacketMaestro PM100+ 100G 24x ports perpetual license, 1Y maintenance and support included
<b>PM100-24P-SW-PERP1</b>	PacketMaestro PM100 100G 24x ports perpetual license, 1Y maintenance and support included
<b>PM25-24P-SW-PERP1</b>	PacketMaestro PM25 25G 24x ports perpetual license, 1Y maintenance and support included
<b>PM10C-24P-SW-PERP1</b>	PacketMaestro PM10C 10G 24x ports perpetual license, 1Y maintenance and support included
<b>PM400+-12P-SW-UPG</b>	PacketMaestro PM400+ 400G Add-On 12x ports license, current maintenance and support applies
<b>PM400-12P-SW-UPG</b>	PacketMaestro PM400 400G Add-On 12x ports license, current maintenance and support applies
<b>PM100+-12P-SW-UPG</b>	PacketMaestro PM100+ 100G Add-On 12x ports license, current maintenance and support applies

<b>PM100-12P-SW-UPG</b>	PacketMaestro PM100 100G Add-On 12x ports license, current maintenance and support applies
<b>PM25-12P-SW-UPG</b>	PacketMaestro PM25 25G Add-On 12x ports license, current maintenance and support applies
<b>PM10C-12P-SW-UPG</b>	PacketMaestro PM10C 10G Add-On 12x ports license, current maintenance and support applies
<b>PM400+-12P-SW-PERP3</b>	PacketMaestro PM400+ 400G 12x ports perpetual 3Y license, maintenance and support included
<b>PM400-12P-SW-PERP3</b>	PacketMaestro PM400 400G 12x ports perpetual 3Y license, maintenance and support included
<b>PM100+-12P-SW-PERP3</b>	PacketMaestro PM100+ 100G 12x ports perpetual 3Y license, maintenance and support included
<b>PM100-12P-SW-PERP3</b>	PacketMaestro PM100 100G 12x ports perpetual 3Y license, maintenance and support included
<b>PM25-12P-SW-PERP3</b>	PacketMaestro PM25 25G 12x ports perpetual 3Y license, maintenance and support included
<b>PM10C-12P-SW-PERP3</b>	PacketMaestro PM10C 10G 12x ports perpetual 3Y license, maintenance and support included
<b>PM400+-24P-SW-PERP3</b>	PacketMaestro PM400+ 400G 24x ports perpetual 3Y license, maintenance and support included
<b>PM400-24P-SW-PERP3</b>	PacketMaestro PM400 400G 24x ports perpetual 3Y license, maintenance and support included
<b>PM100+-24P-SW-PERP3</b>	PacketMaestro PM100+ 100G 24x ports perpetual 3Y license, maintenance and support included
<b>PM100-24P-SW-PERP3</b>	PacketMaestro PM100 100G 24x ports perpetual 3Y license, maintenance and support included
<b>PM25-24P-SW-PERP3</b>	PacketMaestro PM25 25G 24x ports perpetual 3Y license, maintenance and support included
<b>PM10C-24P-SW-PERP3</b>	PacketMaestro PM10C 10G 24x ports perpetual 3Y license, maintenance and support included



## Notice

E.C.I. Networks reserves the right to make changes to or discontinue any optical link product or service identified in this publication, without notice, to improve design and/or performance. Applications that are described herein for any of the optical link products are for illustrative purposes only.

## Get in touch with Pine Networks

Address: 219 Grande Rue Garches, 92380 FRANCE

Call Us: +33 01 88 94 77 04

Email Us: [contact@pine-networks.com](mailto:contact@pine-networks.com)